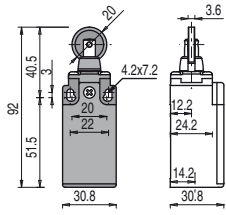


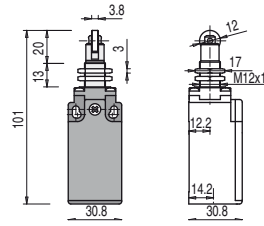
Position switches FR series

- Contact type:
- R** = snap action
 - L** = slow action
 - LO** = slow action overlapped
 - LS** = slow action shifted
 - LV** = slow action shifted and spaced
 - LI** = slow action independent
 - LA** = slow action closer
 - ⏏** = electronic PNP

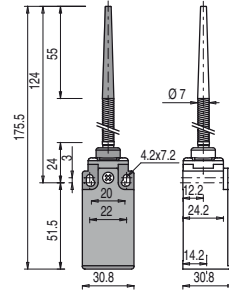
Contact blocks



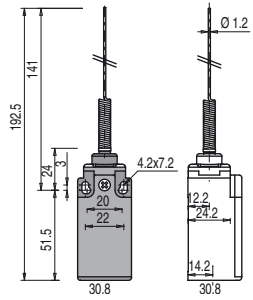
Fixed only by threaded head in vertical position



With external rubber gasket

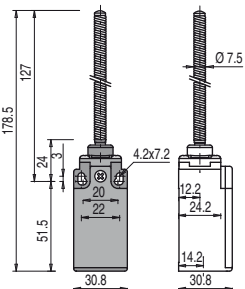


With external rubber gasket

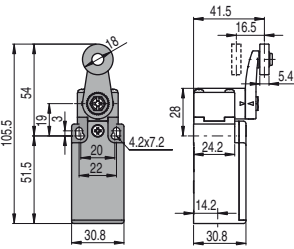


5	R	FR 516-M2	1NO+1NC	FR 517-M2	1NO+1NC	FR 520-M2	1NO+1NC	FR 521-M2	1NO+1NC
6	L	FR 616-M2	1NO+1NC	FR 617-M2	1NO+1NC				
7	LO	FR 716-M2	1NO+1NC	FR 717-M2	1NO+1NC				
9	L	FR 916-M2	2NC	FR 917-M2	2NC				
10	L	FR 1016-M2	2NO	FR 1017-M2	2NO	FR 1020-M2	2NO	FR 1021-M2	2NO
11	R	FR 1116-M2	2NC	FR 1117-M2	2NC				
12	R	FR 1216-M2	2NO	FR 1217-M2	2NO	FR 1220-M2	2NO	FR 1221-M2	2NO
13	LV	FR 1316-M2	2NC	FR 1317-M2	2NC				
14	LS	FR 1416-M2	2NC	FR 1417-M2	2NC				
15	LS	FR 1516-M2	2NO	FR 1517-M2	2NO				
18	LA	FR 1816-M2	1NO+1NC	FR 1817-M2	1NO+1NC	FR 1820-M2	1NO+1NC	FR 1821-M2	1NO+1NC
20	L	FR 2016-M2	1NO+2NC	FR 2017-M2	1NO+2NC	FR 2020-M2	1NO+2NC	FR 2021-M2	1NO+2NC
21	L	FR 2116-M2	3NC	FR 2117-M2	3NC	FR 2120-M2	3NC	FR 2121-M2	3NC
22	L	FR 2216-M2	2NO+1NC	FR 2217-M2	2NO+1NC	FR 2220-M2	2NO+1NC	FR 2221-M2	2NO+1NC
2	R	FR 216-M2	2x(1NO-1NC)	FR 217-M2	2x(1NO-1NC)	FR 220-M2	2x(1NO-1NC)	FR 221-M2	2x(1NO-1NC)
E1	⏏	FR E116-M2	1NO-1NC	FR E117-M2	1NO-1NC	FR E120-M2	1NO-1NC	FR E121-M2	1NO-1NC
Max. speed		page 239 - type 2		page 239 - type 2		1 m/s		1 m/s	
Min. force		8 N (25 N \rightarrow)		8 N (25 N \rightarrow)		0.07 Nm		0.07 Nm	
Travel diagrams		page 240 - group 1		page 240 - group 1		page 240 - group 4		page 240 - group 4	

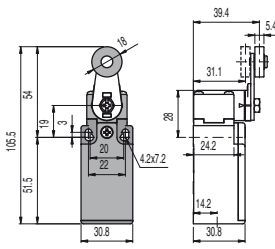
With external rubber gasket



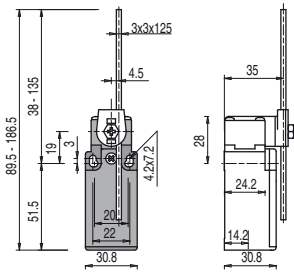
With Ø 20 mm stainless steel roller on request



Other rollers available. See on page 70



Square rod, 3x3 mm



Contact blocks

5	R	FR 525-M2	1NO+1NC	FR 530-M2	1NO+1NC	FR 531-M2	1NO+1NC	FR 533-M2	1NO+1NC
6	L			FR 630-M2	1NO+1NC	FR 631-M2	1NO+1NC	FR 633-M2	1NO+1NC
7	LO			FR 730-M2	1NO+1NC	FR 731-M2	1NO+1NC	FR 733-M2	1NO+1NC
9	L			FR 930-M2	2NC	FR 931-M2	2NC	FR 933-M2	2NC
10	L	FR 1025-M2	2NO	FR 1030-M2	2NO	FR 1031-M2	2NO	FR 1033-M2	2NO
11	R			FR 1130-M2	2NC	FR 1131-M2	2NC	FR 1133-M2	2NC
12	R	FR 1225-M2	2NO	FR 1230-M2	2NO	FR 1231-M2	2NO	FR 1233-M2	2NO
13	LV			FR 1330-M2	2NC	FR 1331-M2	2NC	FR 1333-M2	2NC
14	LS			FR 1430-M2	2NC	FR 1431-M2	2NC	FR 1433-M2	2NC
15	LS			FR 1530-M2	2NO	FR 1531-M2	2NO	FR 1533-M2	2NO
16	LI			FR 1630-M2	2NC	FR 1631-M2	2NC	FR 1633-M2	2NC
18	LA	FR 1825-M2	1NO+1NC	FR 1830-M2	1NO+1NC	FR 1831-M2	1NO+1NC	FR 1833-M2	1NO+1NC
20	L	FR 2025-M2	1NO+2NC	FR 2030-M2	1NO+2NC	FR 2031-M2	1NO+2NC	FR 2033-M2	1NO+2NC
21	L	FR 2125-M2	3NC	FR 2130-M2	3NC	FR 2131-M2	3NC	FR 2133-M2	3NC
22	L	FR 2225-M2	2NO+1NC	FR 2230-M2	2NO+1NC	FR 2231-M2	2NO+1NC	FR 2233-M2	2NO+1NC
2	R	FR 225-M2	2x(1NO-1NC)	FR 230-M2	2x(1NO-1NC)	FR 231-M2	2x(1NO-1NC)	FR 233-M2	2x(1NO-1NC)
E1	⏏	FR E125-M2	1NO-1NC	FR E130-M2	1NO-1NC	FR E131-M2	1NO-1NC	FR E133-M2	1NO-1NC
Max. speed		1 m/s		page 239 - type 1		page 239 - type 1		1.5 m/s	
Min. force		0.12 Nm		0.06 Nm (0.25 Nm \rightarrow)		0.06 Nm (0.25 Nm \rightarrow)		0.06 Nm	
Travel diagrams		page 240 - group 4		page 240 - group 5		page 240 - group 5		page 240 - group 5	

All measures in the drawings are in mm

Items with code on green background are stock items

Accessories See page 225